




# AC-800 and AC-600

## Venetian blinds

Classic.





Classic sun and weather protection

## **AC-800 and AC-600** Convex venetian blinds

AC-800 and AC-600 venetian blinds with convex 80 mm- or 65 mm-wide slats offer good glare protection, privacy protection, and individual light regulation. They are particularly suitable for properties with a classic façade design, and require only minimal recess depths of 120 mm and 100 mm respectively.

Both models are available with rail guidance and alternating guided slats or with cable guidance.

### **Textured coating**

---

The innovative textured coating used for the slats demonstrates significantly better colour retention and weather resistance than the conventional smooth coating. Dirt adhesion is substantially reduced and the slats are easy to clean.

---

### **Daylight use**

---

The blind can be split into two or three sections with different slat inclines. Open slats in the upper section enable daylight to penetrate into the depths of the room, while closed slats in the lower section serve as glare protection for the window.

---

### **Range of colours**

---

Choose from around 20 standard colours, including a range of IGP and metallic colours. You can also choose from more than a thousand RAL, NCS and IGP colours.

---

### **Automated convenience**

---

Venetian blinds can be fitted with electric drives for greater ease of operation. In conjunction with the corresponding controller, this meets the Minergie standard.

---

### **Excellent materials**

---

Metal guide bolts, flanged holes for 8 mm-wide lift tapes, Kevlar-reinforced turning cords and slats with textured coating all ensure that the blinds will last for a long time.

---

### **Cable guidance**

---

The slats can either be guided on one side [e.g. for corner windows] or on both sides by filigree chrome steel cables [AC-830 and AC-630 models].

---



### **Self-supporting system**

---

The self-supporting blind system with no mounting in the recess area preserves insulation, reduces noise transmission, and prevents thermal bridges [Minergie standard]. A central attachment or a reinforcement profile is required for the head rail from widths of 2500 mm and above.

---



### **Holes**

---

The flanged holes prevent the 8 mm-wide lift tape from fraying. Not using delicate plastic lugs avoids the need for premature repairs. The use of striker holes means that each slat is attached to the ladder cord in several places.

---



### **Metal guide bolts**

---

Metal guide bolts ensure durability and resistance to breakage.

---

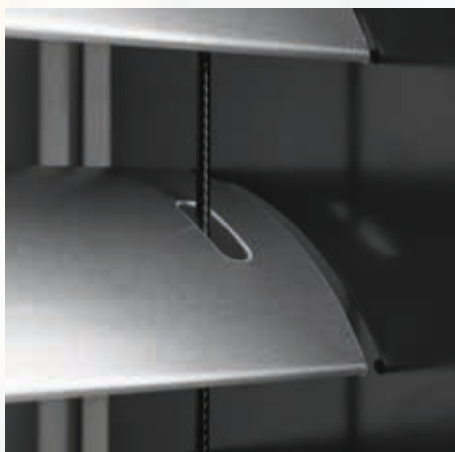


### **Rail guidance**

---

The slats are guided by metal guide bolts on side rails, alternating left and right.

.....

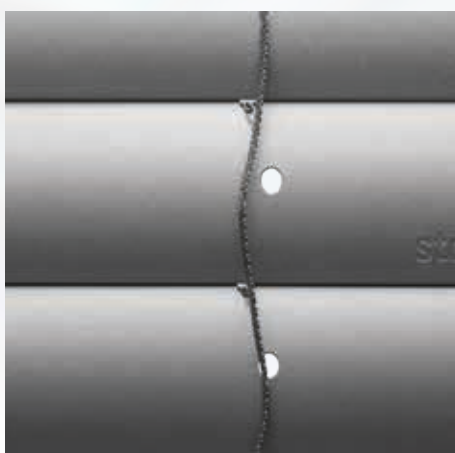


### **Cable guidance**

---

The slats can either be guided on one side or on both sides with 3 mm-thick, PA-coated cables.

.....



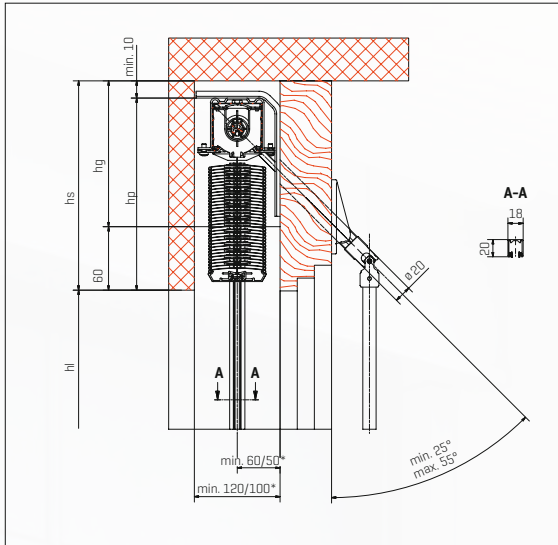
### **Composite technology**

---

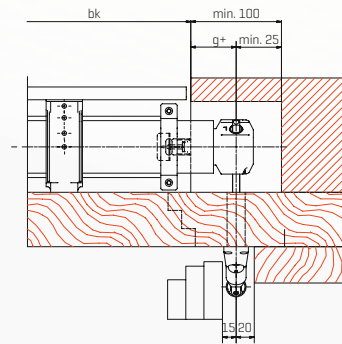
The AC-800 and AC-600 blinds can be equipped with the composite technology used in compound venetian blinds (AC-880 and AC-680). The slats are attached directly to the turning cords with chrome steel hooks, making it much easier to turn and close the blind.

.....

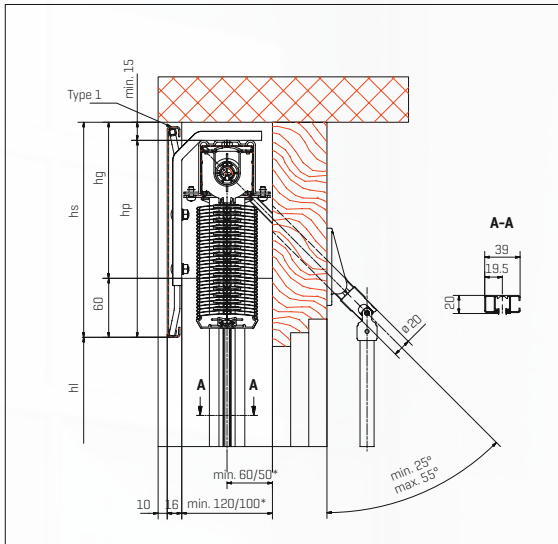
**Installation on embrasure in recess**



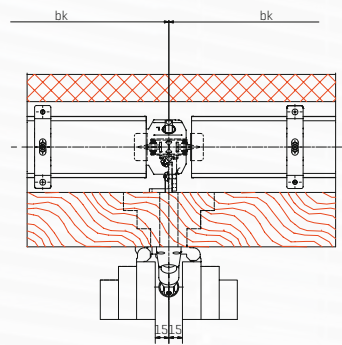
**Recess for gear box**



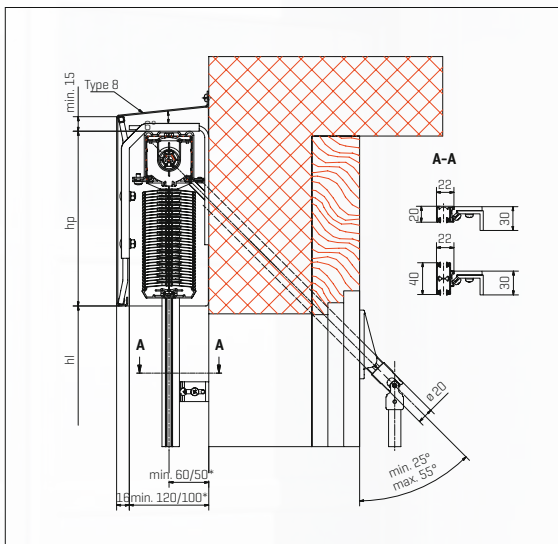
**Self-supporting installation with cover panel type 1**



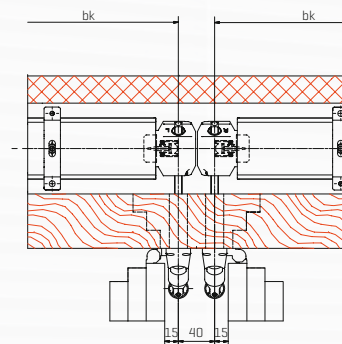
**Crank drive**



**Installation on facade with cover panel type 8**



**Crank drive**



**bk** construction width  
**hk** construction height  
**hl** height of opening  
**hp** height of package  
**hs** height of recess

**hg** height of recess for gear box  
**g+** position of gear/crank handle  
 \* plus protruding door handles and weather boards etc.  
**All dimensions in mm**

<b>Height of opening [hl]</b>	<b>Height of recess [hs] AC-800</b>	<b>Height of recess [hs] AC-600</b>
to 1750 mm	220 mm	220 mm
1751 to 2000 mm	220 mm	235 mm
2001 to 2250 mm	235 mm	250 mm
2251 to 2500 mm	250 mm	270 mm
2501 to 2750 mm	265 mm	290 mm
2751 to 3000 mm	285 mm	305 mm
3001 to 3250 mm	300 mm	325 mm
3251 to 3500 mm	320 mm	340 mm
3501 to 3750 mm	340 mm	360 mm
3751 to 4000 mm	355 mm	375 mm
4001 to 4250 mm	370 mm	395 mm
with cover panel	+ 20 mm	+ 20 mm
minimum	400 mm	400 mm
maximum	4250 mm	4250 mm
maximum without warranty	5500 mm	5500 mm
<b>Construction width [bk]</b>		
min. with crank drive	345 mm	330 mm
min. with electric drive	480 mm	465 mm
max./max. without warranty	4500 mm/6000 mm	4500 mm/6000 mm
<b>Area [bk x hk]</b>		
<b>Single blinds</b>		
max. with crank drive	6 m <sup>2</sup>	6 m <sup>2</sup>
max. with motor drive	10 m <sup>2</sup>	10 m <sup>2</sup>
<b>coupled system</b>		
max. with crank drive	6 m <sup>2</sup>	6 m <sup>2</sup>
max. with electric drive	24 m <sup>2</sup>	24 m <sup>2</sup>
max. coupled blinds	3 pieces	3 pieces
<b>Recess depth [ts]</b>		
minimum	120 mm	100 mm
<b>Wind resistance class</b>		
bk < 1500 mm	class 6	class 6
bk < 2000 mm	class 6	class 6
bk < 2500 mm	class 5	class 5
bk < 3000 mm	class 5	class 5
bk < 3500 mm	class 4	class 4
bk < 4000 mm	class 4	class 4
bk < 4500 mm	class 3	class 3



### Lowering

---

In the standard model, the slats are lowered in the closed position.

In the business model, the slats are lowered in an angled anti-glare position [approx. 40°]. The slats can be adjusted and closed at any height in both models.

---



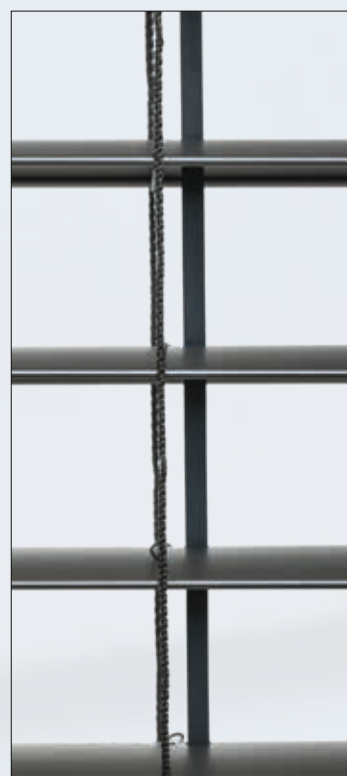
### End position

---

In the standard model, the slats are lowered in the end position. A short upward movement can be used to open them to the horizontal position.

In the business model, the slats are lowered in the angled end position [approx. 40°]. A brief upward movement closes them. A longer upward movement can be used to open them to the horizontal position.

---



### Raising

---

In both models, the blind is raised with the slats in the horizontal position. This allows the maximum amount of light to penetrate and ensures a gentle sliding motion for the lift tape.

---

### Development

---

Storemateral AG  
[www.stoma.ch](http://www.stoma.ch)



AC800.AC600.EN:2024

### Sales

---

